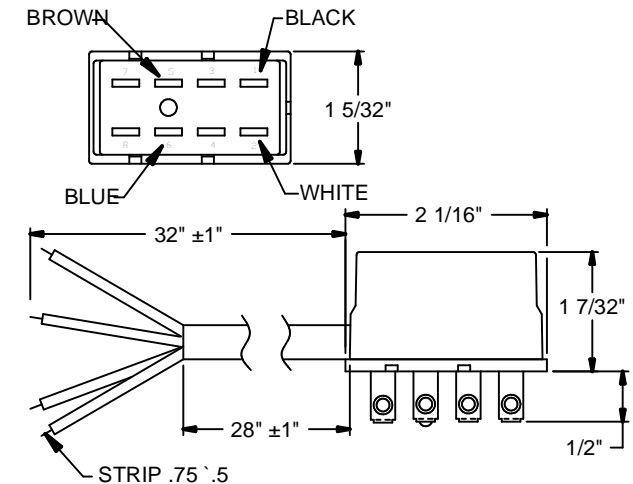
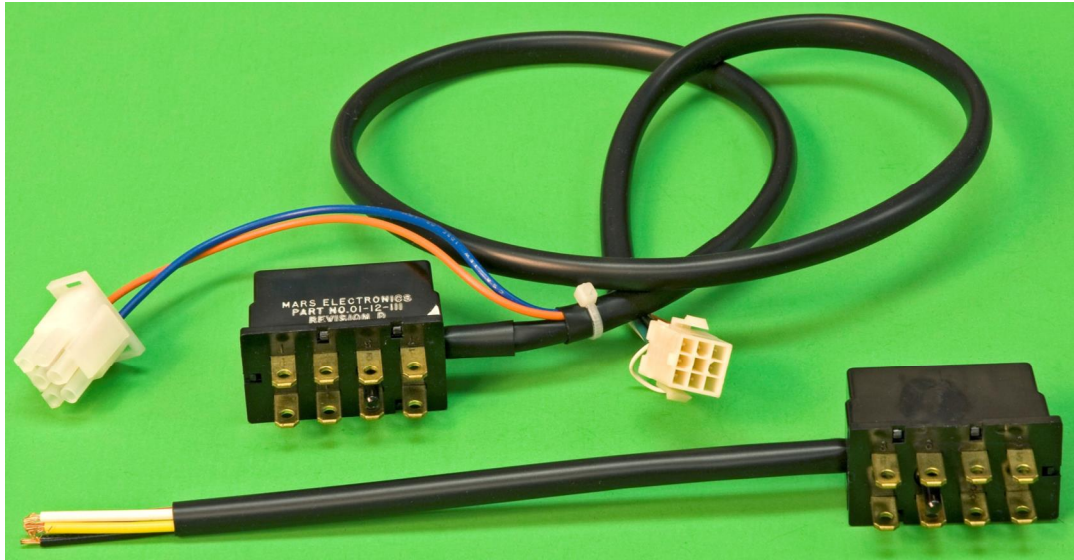




State Tool & Manufacturing

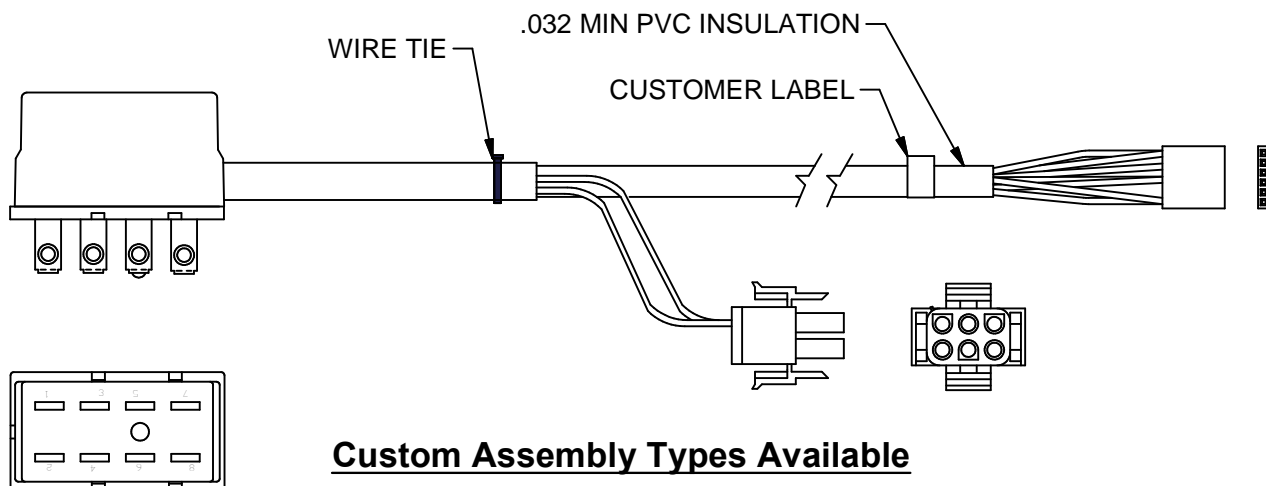
T: 269-927-3153 • F: 269-927-4230 • www.statetool.com

15000 Series Jones Plug Assembly



Technical Data:

1. Various custom assembly types available.
2. Configured with 22 ga. leads standard, or optional #18-20 ga. leads to meet your specification.
3. Body is black Polycarbonate, rated at 221° F.
4. Terminals are brass.
5. UL Recognized: File E95158, Vol #1, UL Standard no. 817.



Custom Assembly Types Available